



# CAREER PATHWAY PORTFOLIO



NAME:

Maya Destiny

GRADE:

11th Grade

SCHOOL:

North Star High

CTE PATHWAY:

Engineering & Design

STUDENT EMAIL:

mdestiny@north.net

CAREER FOCUS:

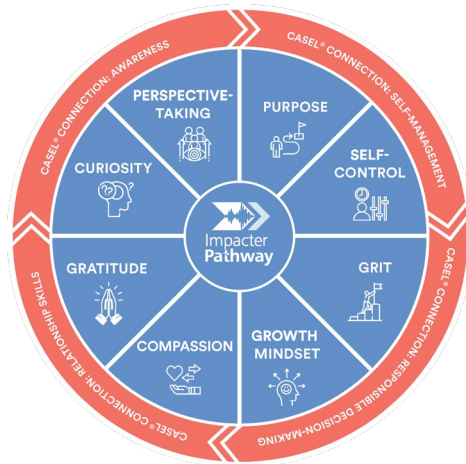
“I’m passionate about designing sustainable technologies that will shape the future of energy-efficient vehicles.”

COLLEGE READINESS:

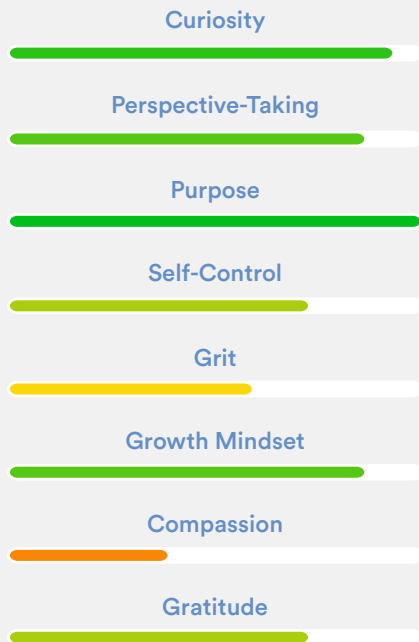
ELA Achievement	92%
Math Achievement	88%
GPA	3.8

Dream School:  
Stanford University

## The Impacter 8 Attributes



## Anchor Attributes Progress



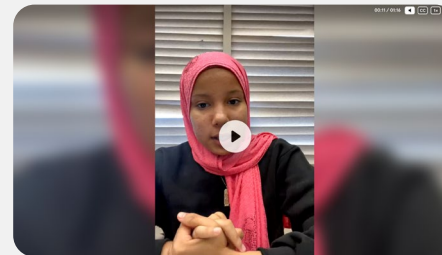
## Journey to Impact



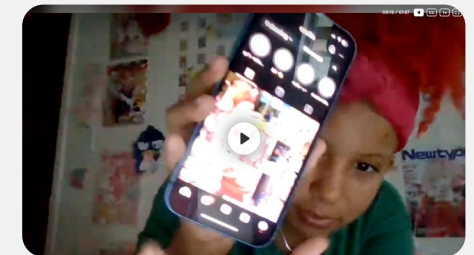
My Purpose Path



Overcoming Obstacles

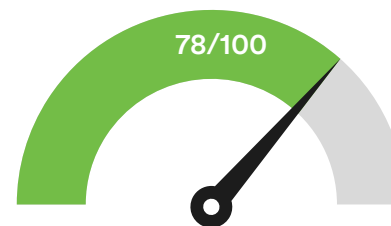


Mentors Who Matter



Milestone Moments

## Tenacity Tracker



## Persistence Pulse



## Impact Endorsement

“Maya exemplifies the qualities of a future innovator in sustainable engineering. Her exceptional problem-solving skills and ability to apply theoretical knowledge to real-world challenges set her apart. Maya consistently demonstrates a remarkable dedication to improving her technical prowess while maintaining a keen awareness of the social impact of her work. Her innovative approach to sustainable design, coupled with his strong leadership potential, makes her an ideal candidate for top-tier engineering programs and future-focused tech companies. Maya is not just preparing for the future; she’s actively shaping it.”