

# IMPACTER PATHWAY

## Anchor Attributes

### NCUST Quality Indicator Alignment

#### Leading Students to Love Learning

A curious student is naturally engaged, asking questions and actively seeking knowledge. Teachers can harness this curiosity by presenting materials in a manner that piques student interest, promoting a classroom environment where the joy of discovery is paramount.

#### Promoting Clarity

When students learn to consider different perspectives, they develop empathy and understanding, which are key to clear communication. This skill is particularly relevant in lessons that require students to demonstrate nuanced understandings of complex topics.

#### Promoting Successful Practice

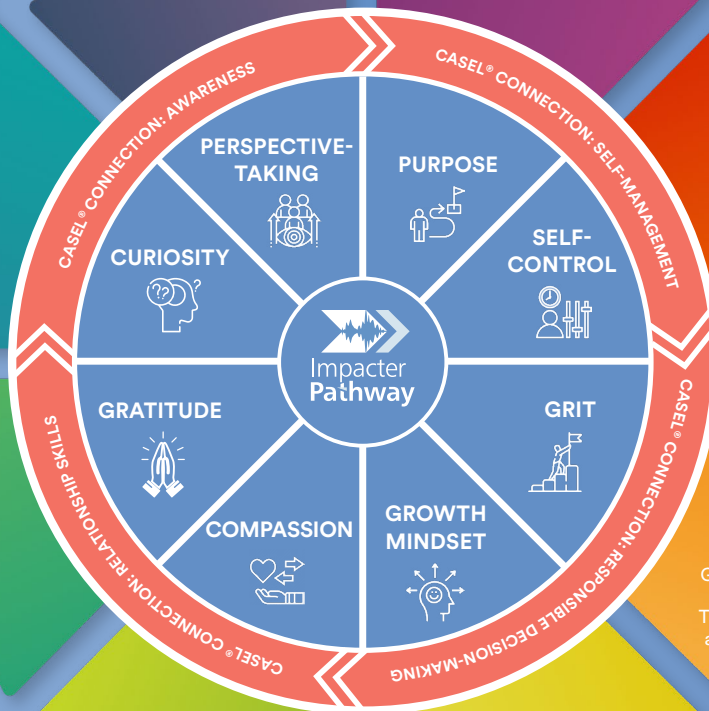
Purpose motivates students to apply themselves consistently and with dedication to their studies. When students understand the 'why' behind their learning, they are more likely to engage in the process actively, seeing education as a meaningful journey towards personal and academic growth.

#### Checking For Understanding, Providing Feedback, and Adapting

Self-control is vital in a learning environment for students to manage their behavior and emotions effectively. This management allows teachers to provide clearer, more tailored feedback, which students can receive and use constructively.

#### Making Students Feel Valued and Capable

Gratitude in the classroom can encourage a positive learning environment where students and teachers appreciate each other's efforts and contributions. This appreciation can build a strong classroom community, making students feel more connected to their learning.



#### Focus on Understanding and Mastery

Gritty students persevere through challenges and are dedicated to mastering subjects. The resilience and tenacity that grit cultivates are essential for students to succeed and for teachers to facilitate an environment where struggle becomes a pathway to mastery rather than a roadblock.

#### Ensuring Culturally, Socially, and Personally Responsive Teaching

When teachers demonstrate compassion, they create a learning environment that acknowledges the diverse backgrounds and needs of students. This understanding fosters a dynamic where students are more open to the relevant and meaningful instruction that teachers provide.

#### Building Fluency With Gatekeeper Vocabulary

A growth mindset encourages students to see the mastery of key vocabulary as a part of their academic growth. Teachers foster this by showing students that their efforts lead to significant improvements in their linguistic abilities.

CASEL® is a registered trademark of the Collaborative for Academic, Social, and Emotional Learning.

# Anchor Attributes & Measurable Outcomes

The vital connection between Impacter Pathway’s Anchor Attributes and the measurable outcomes they inspire in school settings showcase the transformative power of character skills on academic and social-emotional success.

ANCHOR ATTRIBUTE and associated traits	SCHOOL-BASED OUTCOME	MEASURABLE EFFECT
<b>CURIOSITY</b> interests investigation wisdom	<b>Academic Achievement</b>	<p><b>Increased GPAs</b> — The more students question the world, the deeper their engagement with academic content and skills, which leads to academic mastery and higher grades.</p> <p><b>Decreased D/F Rates</b> — Students who ask questions of themselves, their environment, their coursework, etc. demonstrate effective inquiry skills which lead to higher academic outcomes.</p>
<b>PERSPECTIVE-TAKING</b> empathy imagination adaptability	<b>English Proficiency</b>	<p><b>Improved Language Proficiency Among English Learners</b> — By fostering understanding and communication, perspective-taking aids in the linguistic development of students learning English.</p> <p><b>Increased Reclassification Rates</b> — Schools that prioritize perspective-taking see more English Learners meeting criteria for proficiency and transitioning out of language support programs.</p>
<b>PURPOSE</b> intention motivation goal	<b>Attendance</b>	<p><b>Higher ADA</b> — Average Daily Attendance rates are linked to students who see a clear value and end-goal in their education.</p> <p><b>Decreased Tardy/Tuancy Rates</b> — When students are motivated by a purpose, they exhibit consistent and timely attendance.</p>
<b>SELF-CONTROL</b> management focus temperance	<b>Student Behavior</b>	<p><b>Lower Suspension/Referral Rates</b> — Improved self-control results in effective and independent behavioral management.</p> <p><b>Decreased Expulsions</b> — More self-regulation among students results in lower rates of Tier II and III behavioral interventions like Saturday School and expulsion.</p>
<b>GRIT</b> perseverance agility resilience	<b>Graduation Rate</b>	<p><b>Increased Graduation Rates</b> — As students develop perseverance and a commitment to long-term goals, increases in graduation rates also trend up.</p> <p><b>Increased 4-Year College Going Rates</b> — With stronger resilience skills, students are able to increase their ability to fulfill long-term commitments like attending a 4-Year College.</p>
<b>GROWTH MINDSET</b> optimism potential dedication	<b>Standardized Test Scores (AP, SAT, etc.)</b>	<p><b>Increased AP/SAT Scores</b> — As the adaptive skills required to demonstrate a Growth Mindset improve, students experience enhanced performance on standardized testing.</p> <p><b>Improved State Testing Performance</b> — Persistent effort and resilience leads to higher achievement on standardized tests in core academic areas like Math and English.</p>
<b>COMPASSION</b> sympathy connection responsibility	<b>Student Engagement/Climate</b>	<p><b>Higher Participation in School Activities</b> — A compassionate student body fosters a supportive campus environment that encourages involvement in athletics, the arts, and student clubs and activities.</p> <p><b>Positive School Climate Survey Results</b> — Schools with a culture of compassion report more favorable outcomes on climate surveys, reflecting a safe and healthy learning environment.</p>
<b>GRATITUDE</b> appreciation recognition acknowledgement	<b>Enrollment in Advanced Courses</b>	<p><b>Increased Enrollment In AP/Honors Classes</b> — Students pursue challenging courses and extracurricular activities more avidly when they feel recognized and valued by their peers and adults in school.</p> <p><b>Extended Commitment to Advanced Studies</b> — Gratefulness for educational opportunities inspires students to continue enrolling in challenging coursework over extended periods of time.</p>