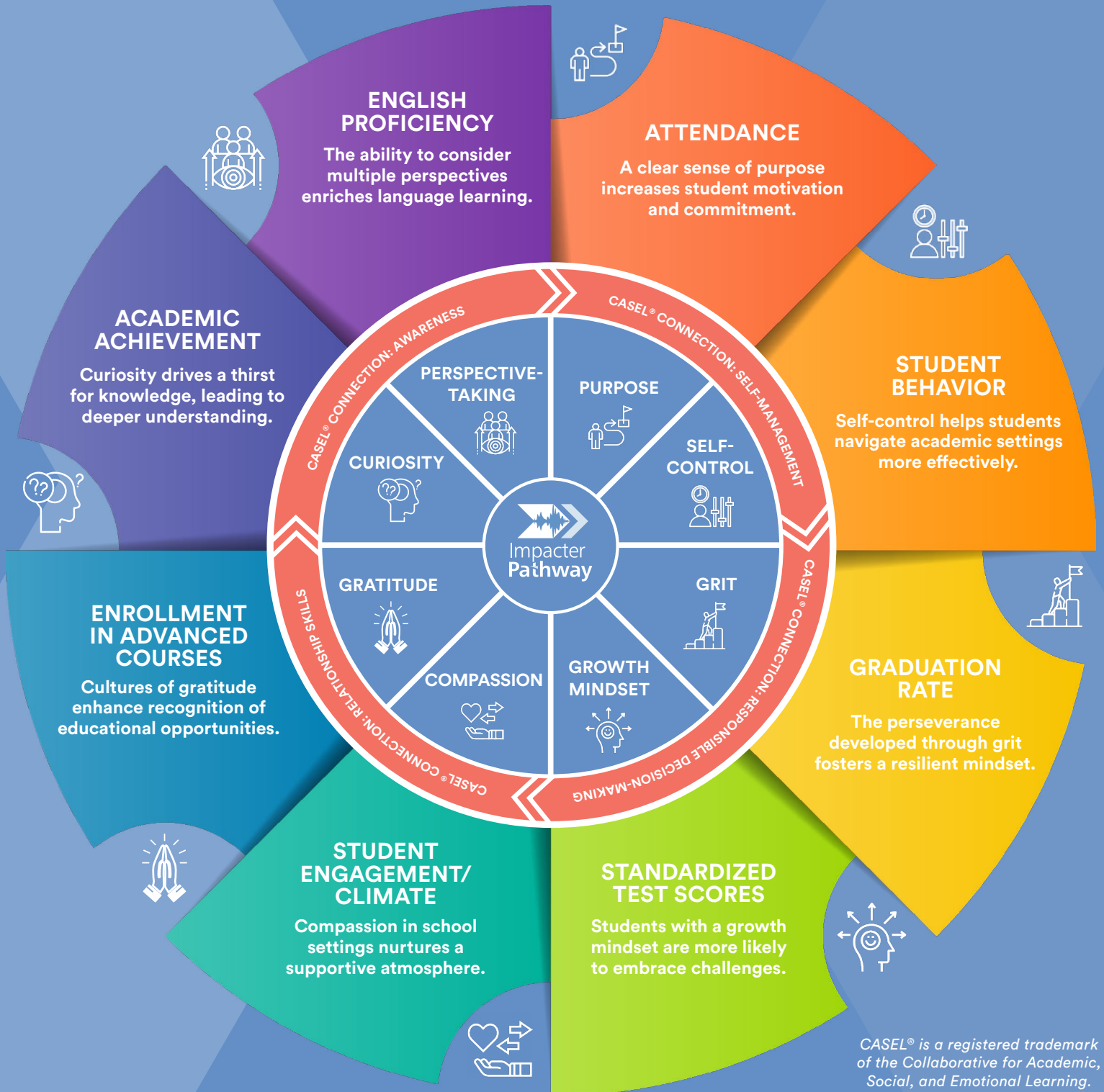


# IMPACTER PATHWAY

## Anchor Attributes

### And Their Measurable Outcomes At School



CASEL® is a registered trademark of the Collaborative for Academic, Social, and Emotional Learning.

# Anchor Attributes & Measurable Outcomes

The vital connection between Impacter Pathway’s Anchor Attributes and the measurable outcomes they inspire in school settings showcase the transformative power of character skills on academic and social-emotional success.

ANCHOR ATTRIBUTE and associated traits	SCHOOL-BASED OUTCOME	MEASURABLE EFFECT
<b>CURIOSITY</b> interests investigation wisdom	<b>Academic Achievement</b>	<p><b>Increased GPAs</b> — The more students question the world, the deeper their engagement with academic content and skills, which leads to academic mastery and higher grades.</p> <p><b>Decreased D/F Rates</b> — Students who ask questions of themselves, their environment, their coursework, etc. demonstrate effective inquiry skills which lead to higher academic outcomes.</p>
<b>PERSPECTIVE-TAKING</b> empathy imagination adaptability	<b>English Proficiency</b>	<p><b>Improved Language Proficiency Among English Learners</b> — By fostering understanding and communication, perspective-taking aids in the linguistic development of students learning English.</p> <p><b>Increased Reclassification Rates</b> — Schools that prioritize perspective-taking see more English Learners meeting criteria for proficiency and transitioning out of language support programs.</p>
<b>PURPOSE</b> intention motivation goal	<b>Attendance</b>	<p><b>Higher ADA</b> — Average Daily Attendance rates are linked to students who see a clear value and end-goal in their education.</p> <p><b>Decreased Tardy/Tuancy Rates</b> — When students are motivated by a purpose, they exhibit consistent and timely attendance.</p>
<b>SELF-CONTROL</b> management focus temperance	<b>Student Behavior</b>	<p><b>Lower Suspension/Referral Rates</b> — Improved self-control results in effective and independent behavioral management.</p> <p><b>Decreased Expulsions</b> — More self-regulation among students results in lower rates of Tier II and III behavioral interventions like Saturday School and expulsion.</p>
<b>GRIT</b> perseverance agility resilience	<b>Graduation Rate</b>	<p><b>Increased Graduation Rates</b> — As students develop perseverance and a commitment to long-term goals, increases in graduation rates also trend up.</p> <p><b>Increased 4-Year College Going Rates</b> — With stronger resilience skills, students are able to increase their ability to fulfill long-term commitments like attending a 4-Year College.</p>
<b>GROWTH MINDSET</b> optimism potential dedication	<b>Standardized Test Scores (AP, SAT, etc.)</b>	<p><b>Increased AP/SAT Scores</b> — As the adaptive skills required to demonstrate a Growth Mindset improve, students experience enhanced performance on standardized testing.</p> <p><b>Improved State Testing Performance</b> — Persistent effort and resilience leads to higher achievement on standardized tests in core academic areas like Math and English.</p>
<b>COMPASSION</b> sympathy connection responsibility	<b>Student Engagement/Climate</b>	<p><b>Higher Participation in School Activities</b> — A compassionate student body fosters a supportive campus environment that encourages involvement in athletics, the arts, and student clubs and activities.</p> <p><b>Positive School Climate Survey Results</b> — Schools with a culture of compassion report more favorable outcomes on climate surveys, reflecting a safe and healthy learning environment.</p>
<b>GRATITUDE</b> appreciation recognition acknowledgement	<b>Enrollment in Advanced Courses</b>	<p><b>Increased Enrollment In AP/Honors Classes</b> — Students pursue challenging courses and extracurricular activities more avidly when they feel recognized and valued by their peers and adults in school.</p> <p><b>Extended Commitment to Advanced Studies</b> — Gratefulness for educational opportunities inspires students to continue enrolling in challenging coursework over extended periods of time.</p>